

*100% Automated  
test execution via Command Line  
Interface (CLI)*

*Reduced test time, cost and test  
bed complexity*

*Easy to use with test cases and  
results in plain text format*

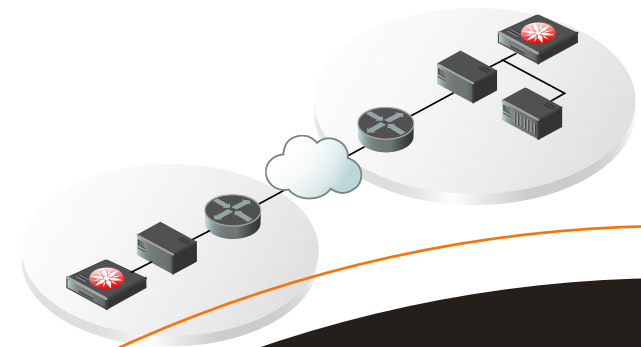
*Scalable, increase test capacity by  
using multiple Test Heads  
in parallel*

*In-depth analysis with ladder  
diagrams and  
SIP traffic captures*

*Delivered with functional  
Test Suites and  
emulation profiles*

*Test Suite execution against  
multiple SUTs simultaneously*

*Generate your own SIP Phone  
emulation by using Zoltes  
CAP technology (Capture, Analysis,  
and Playback)*



**SIPLab  
Phone  
Emulator**



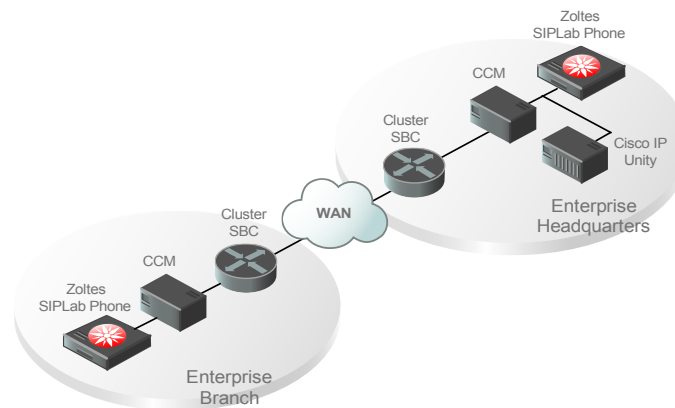
[www.zoltes.com](http://www.zoltes.com)  
3300 N. Main Street, Suite D  
Anderson, SC 29621-4126  
Phone: +1 (864) 505-1102  
Fax: +1 (864) 752-1568

# AUTOMATED INTEROPERABILITY AND REGRESSION TESTING

Zoltes SIPLab Phone automates the interoperability and regression testing using emulated Real World SIP Phones.

SIPLab Phone emulator comes with full automated testing framework via CLI, comprehensive test results and predefined Test Cases augmented with the related test documentation.

SIPLab Phone provides full flexibility integrating with any 3rd-party Test Automation and Provisioning Tools on the market (Mercury QTP/ WinRunner, Eden Tree, etc.).



## KEY FEATURES

- > Automation via CLI or execution from simple GUI
- > Emulate multiple SIP Phones concurrently
- > Easy to create and modify test scenarios in text format
- > Quickly add new SIP Phones Profiles for regression testing
- > Comprehensive test results
  - > SIP Call Flow Ladder Diagram
  - > Test Pass/Fail and Failure Reasons
  - > Automatic integration with Wireshark
  - > Test results stored in CSV file
- > Integrate seamlessly into internal test management systems

## USE CASES

- > SIP Phone emulation to ensure automated backward compatibility
- > Eliminate running manual SIP Phone regression testing
- > SIP Trunk (UA) emulation to ensure interoperability with Service Providers
- > Inter-work with SIPLab Phone and SQA Call Generator in complex test beds

## SPECIFICATIONS

### Package

- > SIPLab Phone Software (CPU bound license)
- > Product documentation
- > User's Guide
- > Sample Test Suite with documentation
- > 20+ SIP Phone Profiles
- > 60+ test scenarios per profile

### Functionality Test Suite

- > Register/ Unregister
- > MakeCall/ AnswerCall/ EndCall
- > Hold/ Unhold
- > Transfer
- > 3 Way Call
- > Media streaming
- > Invalid destination
- > Authentication on/off
- > And others scenarios (public or proprietary scenarios)

### Supported standards

- > RFC 3261 User Agent
- > SIP over UDP
- > SDP RFC 2327
- > RTP RFC 1889
- > G.711 mu-law/ a-law

### Emulated SIP Phones

- > Linksys SPA-942
- > Cisco 7960
- > Cisco 7940
- > Cisco 7905
- > Snom 360/ 320
- > Polycom IP501
- > Linksys SPA 941
- > Grandstream GXP-2000, BT200
- > Elmeg IP290
- > Thomson ST2030
- > ATL IP5000
- > Atcom AT-320
- > D-Link DPH-140S
- > Kingtel KTI-2002P