

*100% Automated
test execution via Command Line
Interface (CLI)*

*Reduce manual execution time and
accelerate your testing*

*Generate calls using real end
devices to mix with
your bulk call generation*

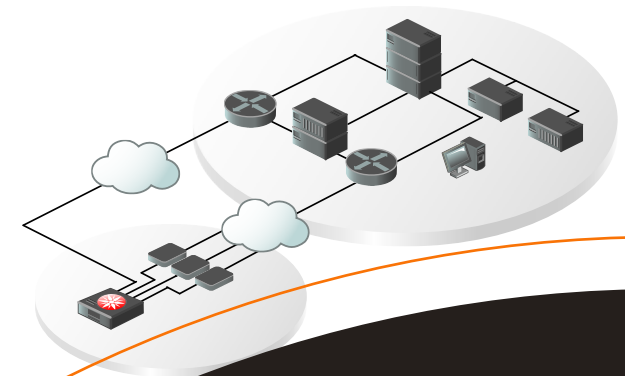
*Easy to use with test cases and
results in plain text format*

*Scalable, increase test capacity by
using multiple Test Heads
in parallel*

*Troubleshoot call flows issues
with ladder diagrams*

*Delivered with 75+ Test Cases
to get you up and running quickly*

*Test Case execution against
multiple SUTs simultaneously*



www.zoltes.com
3300 N. Main Street, Suite D
Anderson, SC 29621-4128
Phone: +1 (864) 505-1102
Fax: +1 (864) 752-1568

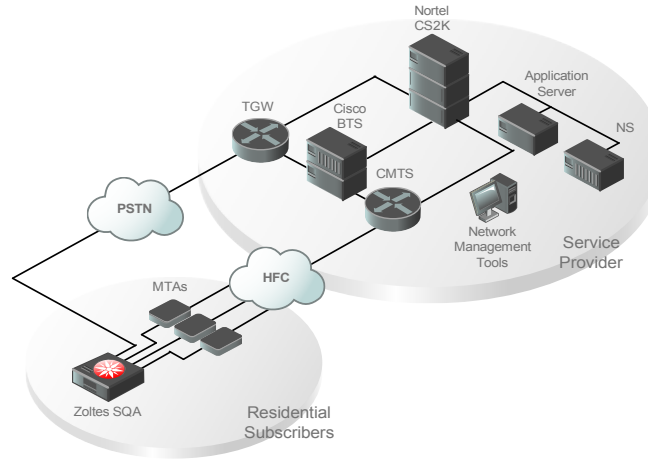
**SQA Call
Generator**

AUTOMATED CLASS 5 FEATURE TESTING

Zoltes SQA Call Generator automates the functionality and regression testing of Class 5 switching solutions.

SQA comes with full automated testing framework via CLI, comprehensive test results and predefined Class 5 features Test Suite.

SQA provides full flexibility integrating with any 3rd-party Test Automation and Provisioning Tools on the market (Mercury QTP/ WinRunner, Eden Tree, etc.).



KEY FEATURES

- > Automation via CLI scripting
- > Originate/ terminate FXO calls using multiple phone terminals concurrently
- > Synchronize phone terminals to match the required testing procedure
- > Verify SUT announcements and voice prompts
- > Easy to create and modify test scenarios in text format
- > Comprehensive test results
 - > Call Flow Ladder Diagram
 - > Test Pass/Fail and Failure Reasons
 - > Test results stored in CSV file
- > Integrate seamlessly into internal test management systems

USE CASES

- > Class 5 Feature testing
 - > Comprehensive verification of vertical services
 - > POTS and Centrex subscribers
- > System Under Test
 - > Cisco BTS 10200 Softswitch
 - > Nortel CS 2000 Softswitch
 - > Cisco IAD, Arris MTA
- > Inter-work with SIPLab Phone and SIPLab Trunk in complex test beds

SPECIFICATIONS

Package

- > SQA Call Generation H/W and S/W
- > 2U/4U chassis
- > Analog FXO interfaces
- > Product Documentation
- > User's Guide Manual
- > Reference Manual

Test Commands

- > OffHook/ OnHook
- > Dial/ WaitCall
- > Transfer/ Flashhook
- > SendDTMF/ WaitDTMF
- > SendTone/ WaitTone
- > PathConfirmation
- > Sleep
- > PlayVoice/ RecordVoice
- > ExecuteProcess

Class 5 Feature Test Suite (75+ Test Cases)

- > AC - Automatic Callback
- > ACR - Automatic Recall
- > BC - Basic Call
- > COS - Class of Service Screening
- > CFB - Call Forward Busy
- > FNA - Call Forward No Answer
- > CFU - Call Forward Unconditional
- > CW - Call Waiting
- > CIDCW - Caller ID Call Waiting
- > CCW - Cancel Call Waiting
- > CIDSS - Calling Identity Delivery and Suppression
- > CNAM - Calling Name Delivery
- > CND - Calling Number Delivery
- > CT - Call Transfer
- > TWC - Three Way Calling
- > USTWC - Usage Sensitive Three Way Calling
- > VM - Voice Mail
- > ANN - Network Announcements
- > SC1D - One Digit Speed Dial
- > DB800 - Dialing- 800/877/888
- > DIALPLAN
- > MWI - Message Waiting Indicator
- > NPLAN - intraLATA
- > TSOA - Tandem Services Operator Assistance
- > TRMT - Busy Treatment